



PEFC-COC Initial Training

2025



Welcome and Presentation

Welcome and presentation

- Your Name
- Link with PEFC
- What are your expectations for the training

Agenda

- Introduction
- **PEFC ST 2002:2020**
 - Management System
 - Identification of inputs & declaration of outputs
 - Due diligence system
 - CoC Methods
- **PEFC ST 2001:2020: Trademarks**
- **PEFC ST 2003:2020: Certification Body Requirements**



What is PEFC

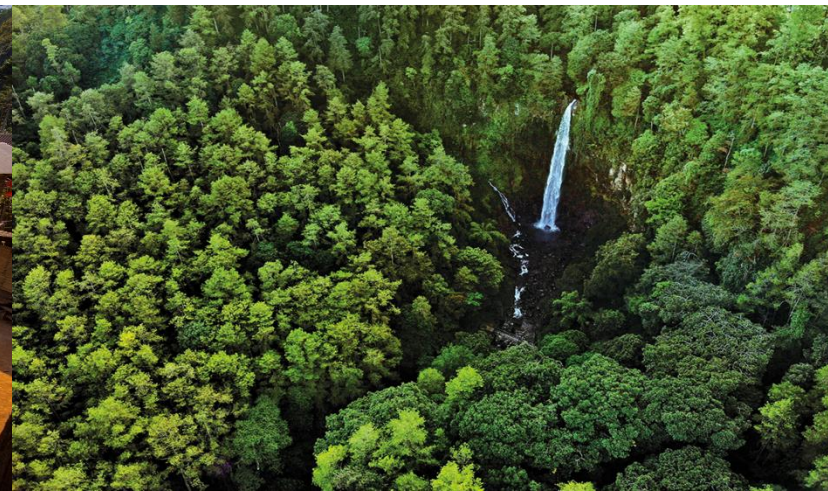
PEFC is an NGO dedicated to forests and their values to the planet and people

1

Balancing social, environmental and economic sustainability

2

Inspiring and helping people, companies and communities to “reach higher”



What we do?

A voluntary, market-based instrument, implemented through two core processes.

- Setting international standards
- Assessment & endorsement of national forest certification systems



Sustainable forest management
certification

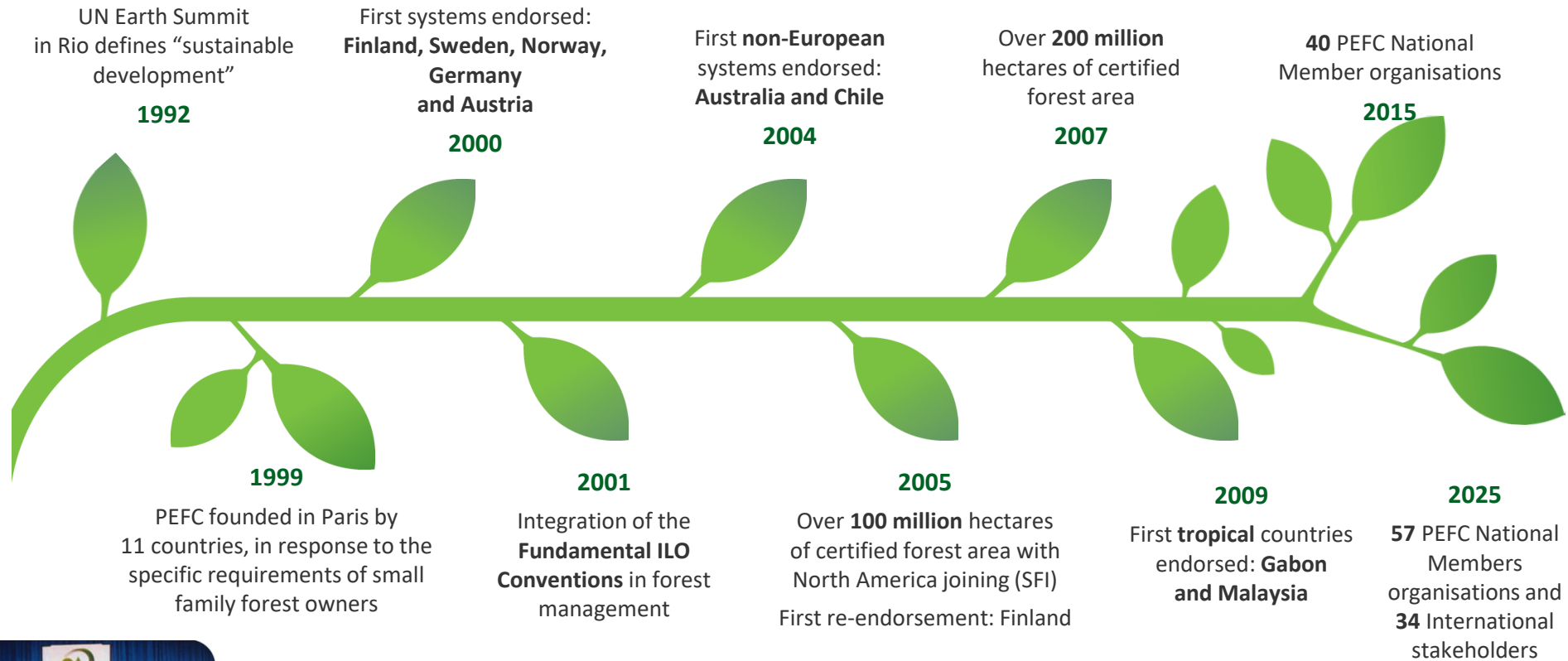


Chain of custody
certification

PROVIDES

- Healthy forests ecosystems (e.g., biodiversity, carbon)
- Healthy workers (e.g., safety, training)
- Healthy communities (e.g., indigenous people rights)
- Healthy local economy (e.g., jobs, income)
- Assurance of origin from sustainably managed forests
- Legal compliance
- Independently audited traceability from forests to consumers
- Covering requirements on health, safety and labour issues

PEFC's history



Our core principles have led to growth

BALANCED

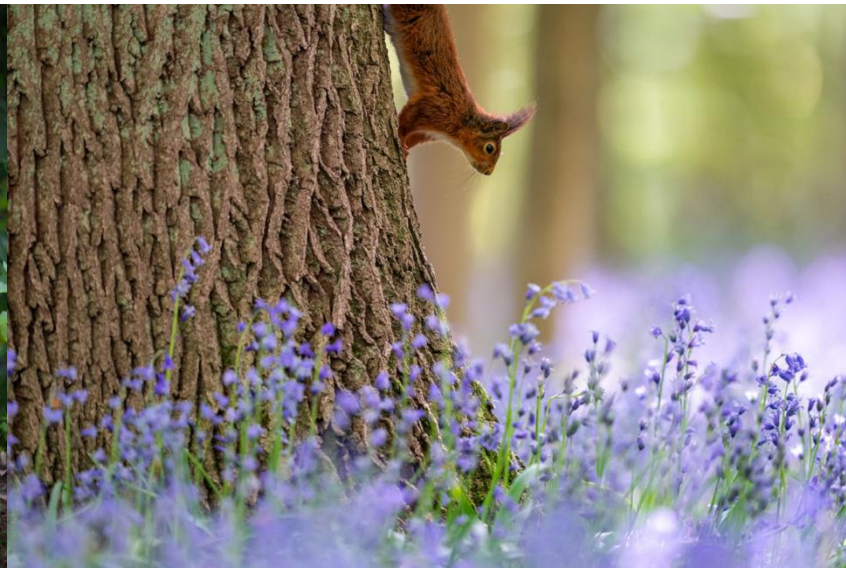
People, Forests, Green Growth

IMPARTIAL

Standards developed by all stakeholders

SCALE

Leader in certified material availability



PEFC Governance



PEFC General Assembly in Paris 2024

PEFC Membership (General Assembly)

- 57 National members
- 34 International Stakeholders members

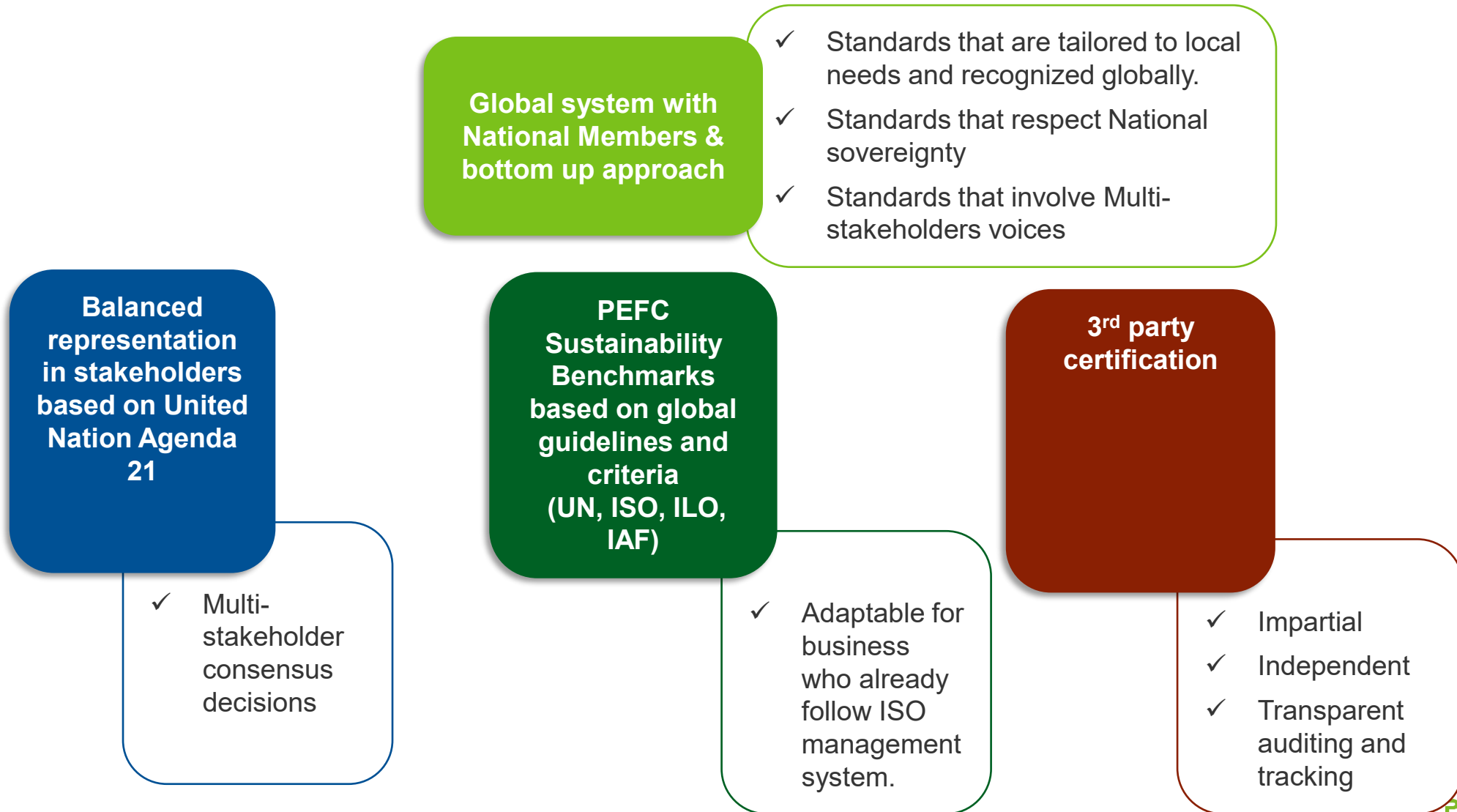
PEFC Board of Directors

- Forest owners, forest industry, research, indigenous people, NGO, labour....

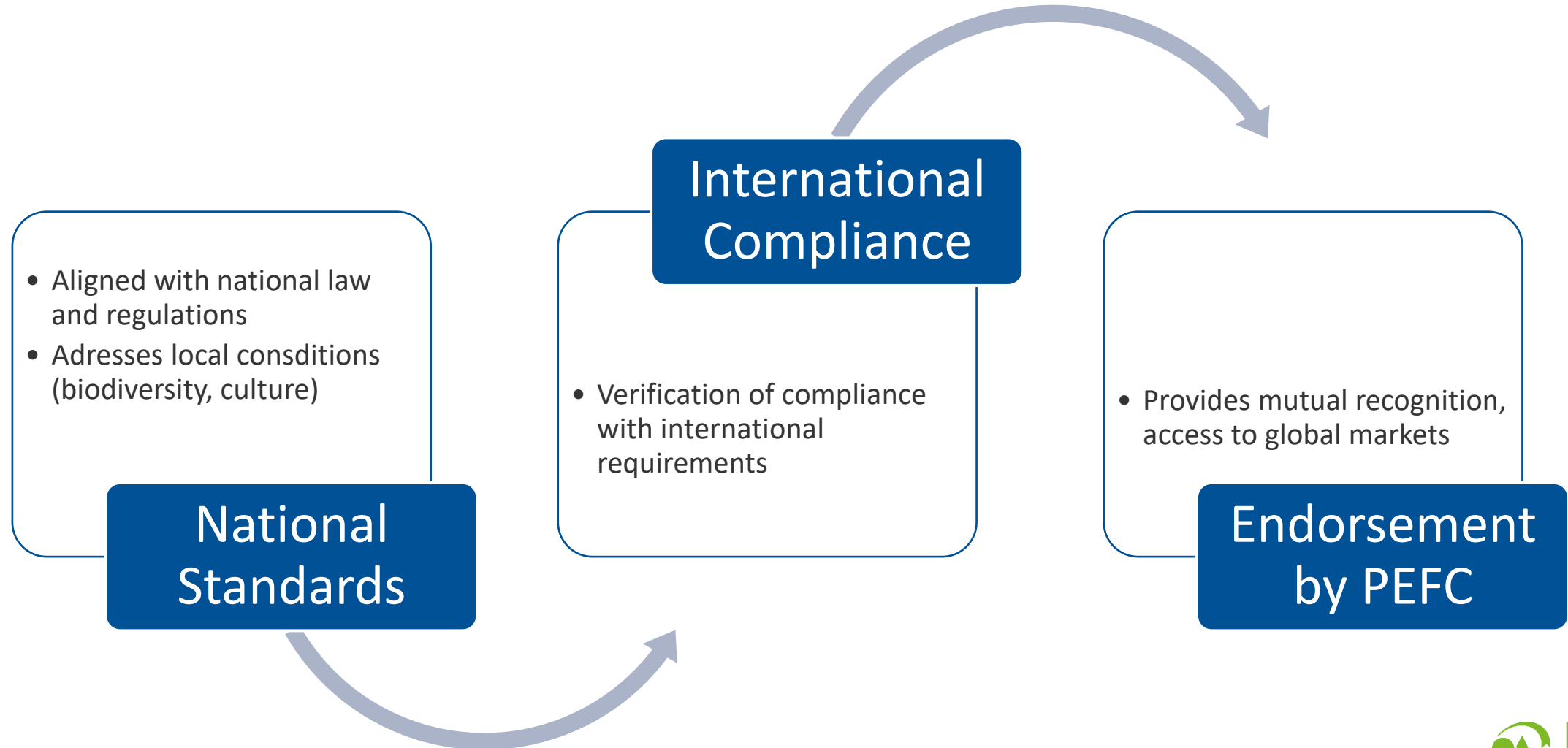
PEFC Secretariat

- >20 Staff members
- Supported by consultants globally

What makes PEFC different?



PEFC's Bottom-Up Approach



Why choose PEFC Certification



NL - TPAC
(Timber Procurement
Assessment)



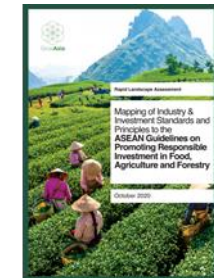
European Green
Public Procurement



The Lacey Act
2008 (amended)



Australia Illegal Logging
Prohibition Act 2012



ASEAN RAI

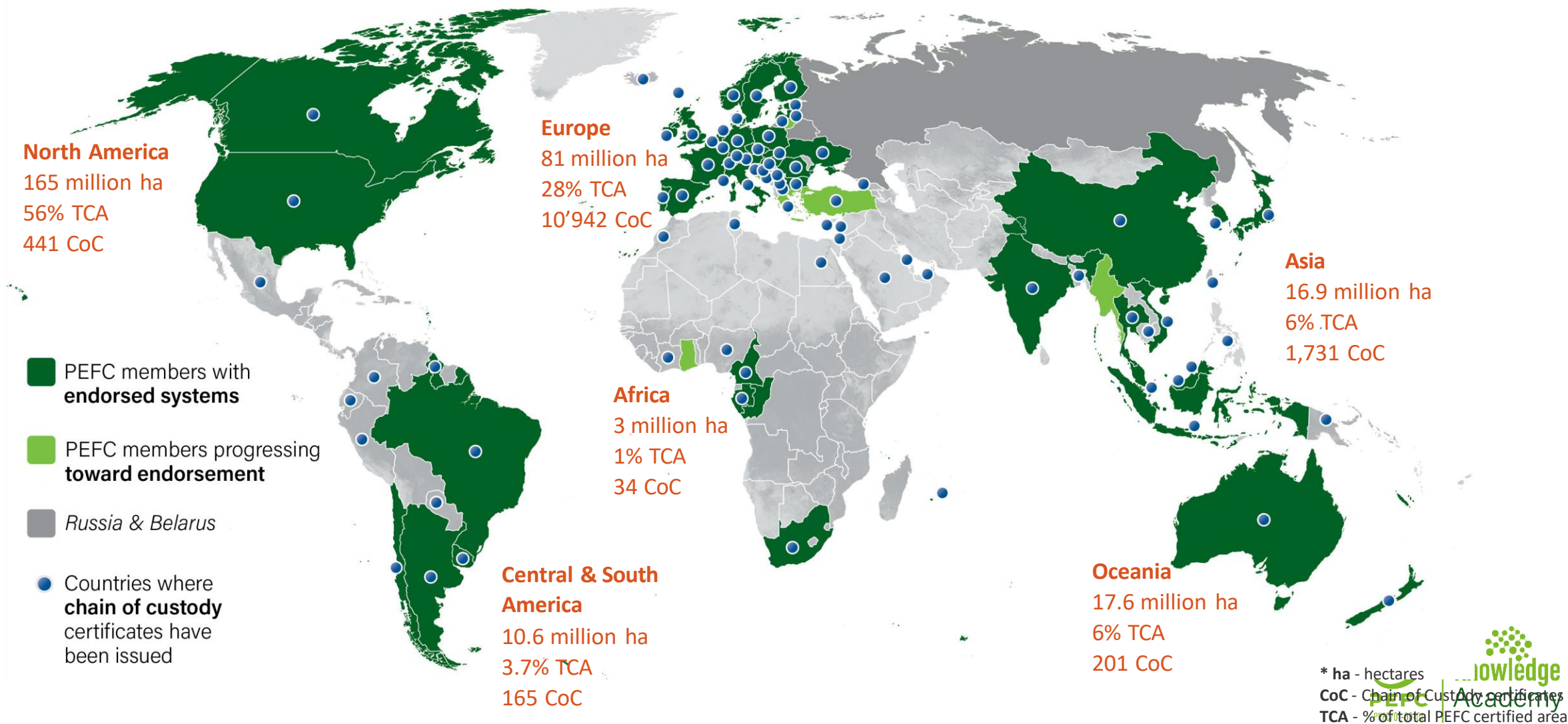
Add some examples
specific to your country



PEFC International General Statistics

Members, endorsed systems, distribution of certificates

Data:
March 2025



International stakeholder members

- APP Timber
- Arauco
- Asia Pacific Resources International Holdings Ltd. (APRIL)
- Association Technique Internationale des Bois Tropicaux (ATIBT)
- Bioenergy Europe
- Building and Wood Worker's International (BWI)
- CMPC Celulosa S.A.
- Confederation of European Forest Owners (CEPF)
- Confederation of European Paper Industries (CEPI)
- Double A
- European Confederation of Agricultural, Rural and Forestry Contractors (CEETTAR)
- European Panel Federation (EPF)
- European Pulp Industry Sector Association AISBL (EPIS)
- European Timber Trade Federation (ETTF)
- European Tissue Symposium (ETS)
- HS Timber Group
- International Council of Forest and Paper Associations (ICFPA)
- International Family Forestry Alliance (IFFA)
- Mayr-Melnhof Holz
- Mercer International
- Metsä Group
- Mondi
- Olam International
- Precious Woods
- Purinusa Ekapersada (APP)
- RECOFTC
- Sappi
- Smurfit Kappa
- StoraEnso
- Suzano Pulp and Paper
- Union of Silviculturists of Southern Europe (USSE)
- UPM Kymmene Corporation
- WestRock
- Weyerhaeuser Company

Certified forest area by region

Data:
March 2025

Europe		Certified area (ha)	
Austria	3,442,605	Netherlands	4,675
Belgium	289,340	North Macedonia	106,318
Bulgaria	280,829	Norway	7,256,500
Czech Republic	1,764,942	Poland	7,259,520
Denmark	355,670	Portugal	307,332
Estonia	1,690,444	Romania	654,313
Finland	16,912,736	Slovak Republic	1,098,326
France	5,896,646	Slovenia	294,689
Germany	8,846,546	Spain	2,844,983
Ireland	471,261	Sweden	16,434,218
Italy	1,060,943	Switzerland	218,866
Latvia	1,722,504	Ukraine	269,627
Luxembourg	41,561	United Kingdom	1,599,753
		Total	81,125,146

Asia		Certified area (ha)
China	3,140,796	
Indonesia	4,584,865	
Japan	2,202,170	
Korea, Republic of	704,909	
Malaysia	6,021,357	
Thailand	1,856	
Vietnam	213,459	
Total	16,869,411	

Central & South America		Certified area (ha)
Argentina	360,330	
Brazil	5,965,735	
Chile	1,113,610	
French Guiana	2,425,034	
Uruguay	736,265	
Total	10,600,974	

Africa		Certified area (ha)
Cameroon	149,079	
Congo, Republic of	1,159,643	
Gabon	1,027,494	
South Africa	684,985	
Total	3,021,201	

North America		Certified area (ha)
Canada (CSA)	11,735,318	
Canada (SFI)	119,372,330	
USA (ATFS)	5,130,278	
USA (SFI)	28,415,969	
Total	164,653,895	

Oceania		Certified area (ha)
Australia	16,967,612	
New Zealand	598,688	
Total	17,566,300	

Chain of custody certificates by region

Data:
March 2025

Asia	
Bahrain	1
Bangladesh	1
Brunei Darussalam	1
Cambodia	3
China	464
India	51
Indonesia	62
Israel	3
Japan	484
Korea, Republic of	33
Lebanon	3
Malaysia	374
Philippines	5
Saudi Arabia	1
Singapore	38
Taiwan	13
Thailand	28
United Arab Emirates	27
Vietnam	139
Total	1731

Africa	
Cameroon	1
Congo, Republic of	1
Côte d'Ivoire	1
Egypt	4
Gabon	2
Mauritius	2
Morocco	4
Nigeria	1
South Africa	16
Tunisia	2
Total	34

Central & South America	
Argentina	21
Brazil	39
Chile	60
Colombia	2
Ecuador	2
Guyana	1
Paraguay	2
Peru	33
Uruguay	5
Total	165

Oceania	
Australia	175
Marshall Islands	1
New Zealand	24
Papua New Guinea	1
Total	201

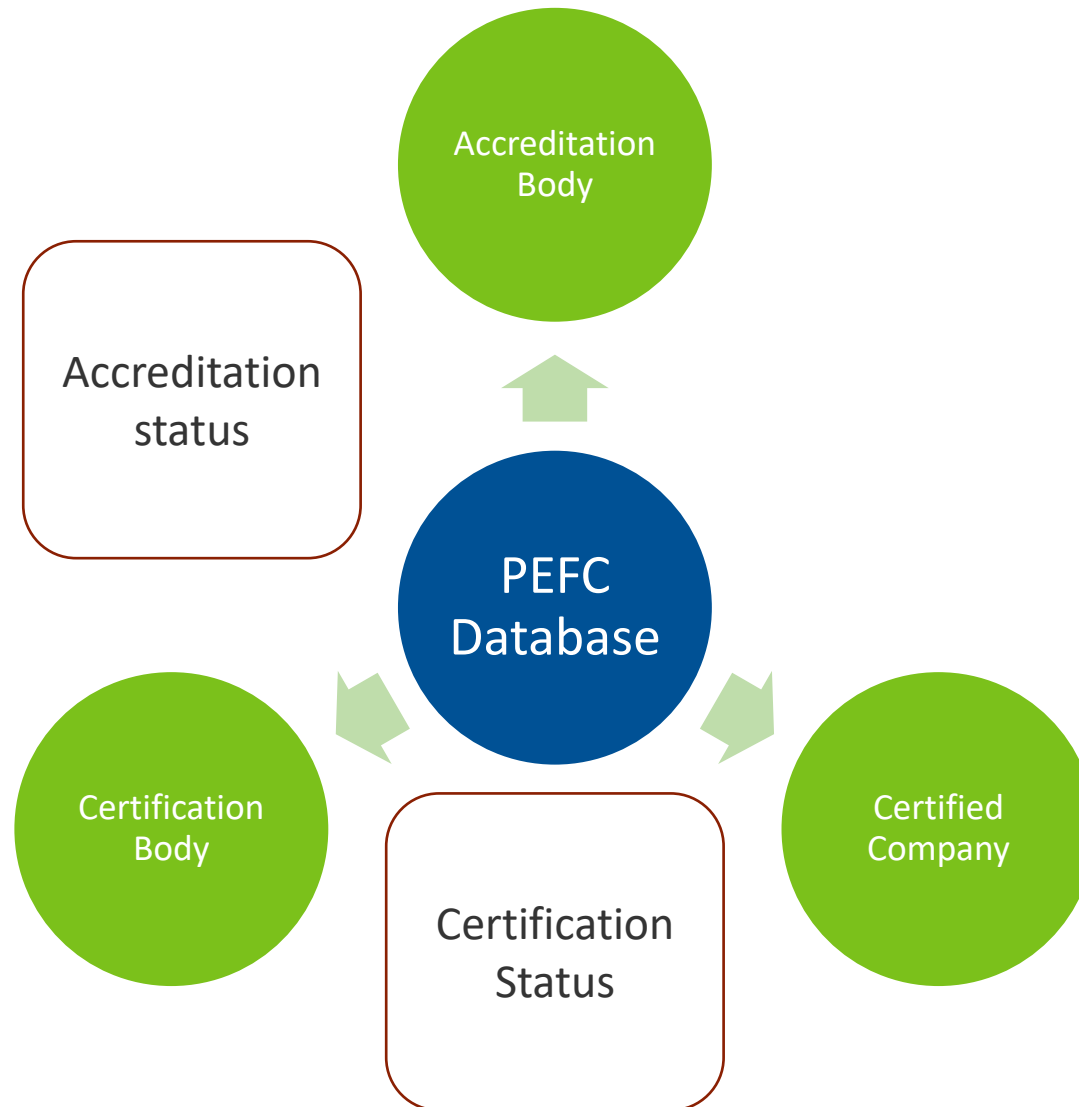
Europe	
Austria	597
Belgium	264
Bosnia & Herzegovina	4
Bulgaria	93
Croatia	15
Cyprus	1
Czech Republic	217
Denmark	149
Estonia	125
Faeroe Islands	1
Finland	268
France	2054
Georgia	1
Germany	1733
Greece	8
Hungary	22
Iceland	1
Ireland	44
Italy	936
Kosovo	4
Latvia	134
Liechtenstein	1
Lithuania	28
Luxembourg	19
Monaco	3
Netherlands	487
North Macedonia	1
Norway	95
Poland	690
Portugal	265
Romania	55
Serbia	8
Slovak Republic	120
Slovenia	68
Spain	1159
Sweden	215
Switzerland	85
Turkey	82
Ukraine	11
United Kingdom	879
Total	10,942

North America	
British Virgin Islands	1
Canada	172
Mexico	21
USA	247
Total	441



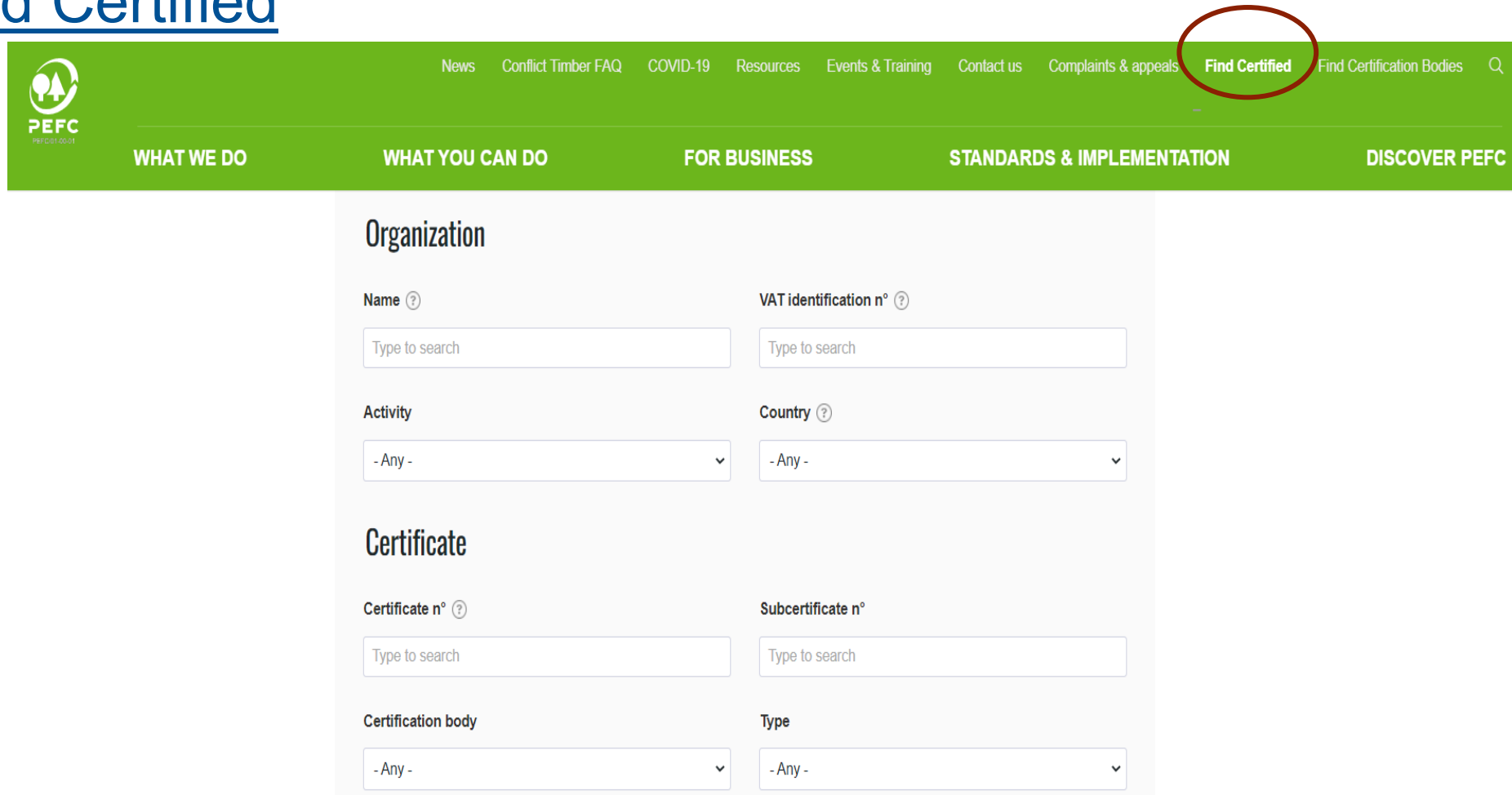
PEFC International Database

Monitoring system integrity



Where and How

- Find Certified



PEFC

News Conflict Timber FAQ COVID-19 Resources Events & Training Contact us Complaints & appeals **Find Certified** Find Certification Bodies

WHAT WE DO WHAT YOU CAN DO FOR BUSINESS STANDARDS & IMPLEMENTATION DISCOVER PEFC

Organization

Name ? VAT identification n° ?

Type to search Type to search

Activity Country ?

- Any - - Any -

Certificate

Certificate n° ? Subcertificate n°

Type to search Type to search

Certification body Type

- Any - - Any -

Where and How

- [Find Certification Bodies](#)

PEFC
PERC 01-00-01

News Conflict Timber FAQ COVID-19 Resources Events & Training Contact us Complaints & appeals Find Certified **Find Certification Bodies** 🔍

WHAT WE DO WHAT YOU CAN DO FOR BUSINESS STANDARDS & IMPLEMENTATION DISCOVER PEFC

Home > Find Certification Bodies

Find Certification bodies

This search facility provides users with the opportunity to find information on PEFC Notified Certification Bodies.

Certification body	Technical scope
<input type="text" value="- Any -"/>	<input type="text" value="- Any -"/>
Geographic scope	Accreditation body
<input type="text" value="- Any -"/>	<input type="text" value="- Any -"/>
Accreditation number	Accreditation status
<input type="text" value="Type to search"/>	<input type="text" value="- Any -"/>



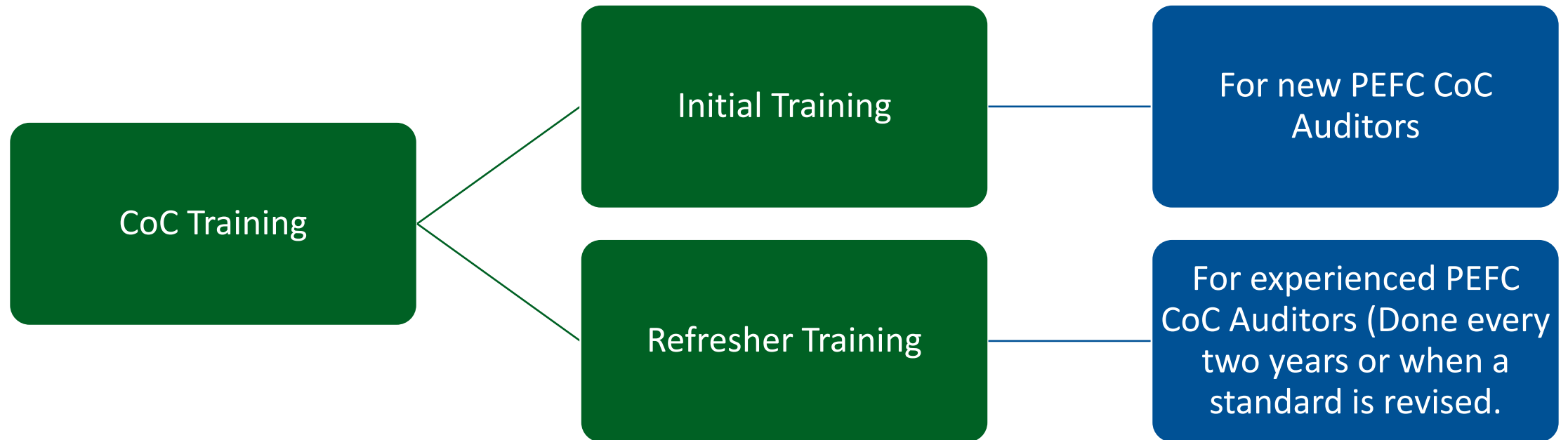
Chain of Custody Training

Subtitle

PEFC Chain of custody framework - training goal

PEFC CoC is implemented in
a harmonised,
consistent and
transparent way
worldwide

Types of PEFC CoC Training for Auditors



Who conducts the training?

NGBs (National Governing Bodies)

- Recognized national trainers under the pool of experts programme

Certification Bodies

- Recognized certification bodies with internal training programmes under TRP

PEFC Secretariat

- PEFC Secretariat Technical Team

PEFC trainings & webinars

PEFC

WHAT WE DO WHAT YOU CAN DO FOR BUSINESS STANDARDS & IMPLEMENTATION DISCOVER PEFC

Events and Trainings

Home > Events & Training

Events & Training

December 2022

PEFC chain of custody initial training: Malaysia

AUDITOR TRAINING

29 December 2022

01:30

Add to my calendar

Auditors, reviewers, and certification decision makers

Filter by theme

- Auditor training
 - TRP session
 - Accreditation body training
 - System introduction webinar
 - Construction event
 - Fashion event
 - Packaging event
 - Rubber event

Filter by country

<https://www.pefc.org/events-training>

Training requirements for new auditors

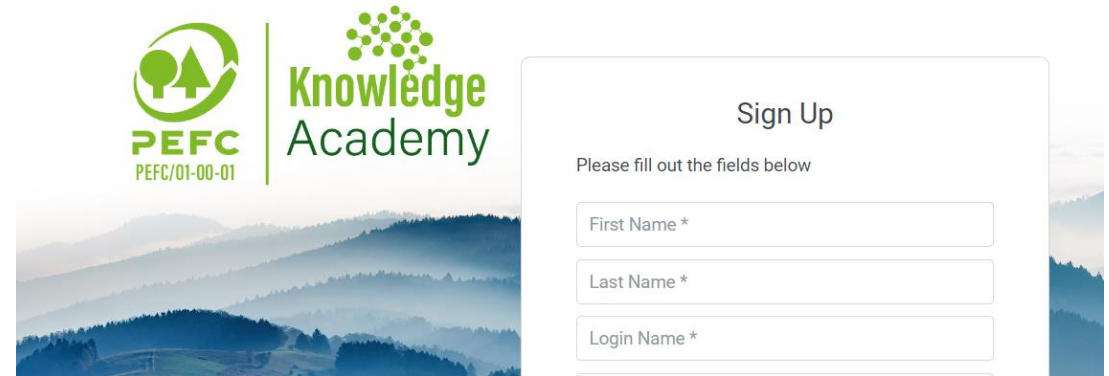


Training Process:

- i) Attend a PEFC CoC **initial** training.
- ii) Pass knowledge test:
 - The pass mark is 80%
 - Scores between 65% and 79%: the participant can retake the test on the platform.
 - Scores of less than 65%: the participant will need to re-take a recognized PEFC CoC initial training and contact PEFC international to retake the knowledge test.
- iii) Automatically receive new CoC training certificate.

PEFC Knowledge Academy

- Online platform for auditors to take the knowledge test
- You will have access for a maximum of 1 month until you finish the test.



The image shows a sign-up form for the PEFC Knowledge Academy. On the left, there is a logo for PEFC (Programme for the Endorsement of Forest Certification) with the text 'PEFC/01-00-01' below it. To the right of the logo is the 'Knowledge Academy' logo, which features a stylized tree icon made of dots. The background of the form is a scenic image of misty mountains. The form itself has a white background with a light blue border. It contains the following elements:

- Sign Up**: The title of the form.
- Please fill out the fields below**: A prompt for the user to enter their information.
- First Name ***: A text input field.
- Last Name ***: A text input field.
- Login Name ***: A text input field.

PEFC CoC Training Validity

- Each initial training certificate is valid for 2 years
 - If the training completion date is between 01/01/202X and 30/06/202X then it will expire on 30/06/202X+2, i.e. **two years later end June**
 - If the training completion date is between 01/07/202X and 31/12/202X then it will expire on 31/12/202X+2, i.e. **two years later end December**
- Training expiry dates are reflected on the training certificate that is only issued by PEFC International.



CERTIFICATE OF TRAINING

This is to confirm that

[Redacted Name]

of

[Redacted Organization]

has successfully completed a recognized PEFC chain of custody training and passed the knowledge test.

Type of training: [Redacted]

Trained by: [Redacted]

Issue date: [Redacted]

Certificate ID: **PEFC-COC-A/R/CD** [Redacted]

This certificate demonstrates the compliance of the auditor, reviewer, or certification decision maker with PEFC's chain of custody training requirements as specified in PEFC ST 2003:2020.

It is valid until **30 June 2026**

The training covered the following standards:

- PEFC ST 2002:2020
- PEFC ST 2002-1:2024
- PEFC ST 2003:2020
- PEFC ST 2001:2020

APPROVED
BY PEFC INTERNATIONAL

PEFC
PEFC/01-00-01

For enquiries please contact training@pefc.org • PEFC International – ICC Building C1, Route de Pré-Bois 20, CH-1215 Geneva 15, Switzerland – www.pefc.org

Other Additional Voluntary Trainings

- PEFC International also offers the following trainings
 - PEFC EUDR DDS Training offered through our recognized global trainers
 - RED II-RED III only offered by PEFC International

If interested, please contact training@pefc.org

PEFC
PEFC/01-00-01

PEFC ST 2002-1:2024

**Requirements for the Implementation
of PEFC EUDR Due Diligence System
(PEFC EUDR DDS)**



Chain of Custody Related Standards

Standards Governance

- Chain of Custody Working Group



Diverse team from NGOs,
CBs, Companies, National
Members, consultants, etc.

- General Assembly



Current Chain of Custody Related Standards and guidance

- Revised and published in February 2020
- There are three chain of custody related standards:
 - i) Chain of Custody Requirements
 - ii) Trademark Rules Requirements
 - iii) Requirements for Certification Bodies
- One Guidance for all three standards



Chain of Custody of Forest and Tree Based Products and Related Standards – Guidance for Use

Second edition



PEFC Council
ICC Building C1, Route de Pré-Bois 20, 1215 Geneva 15, Switzerland
t +41 22 799 45 40 • f +41 22 799 45 50 • info@pefc.org • www.pefc.org

Downloadable References

- Links to download:
 - [PEFC ST 2001:2020](#)
 - [PEFC ST 2002:2020](#)
 - [PEFC ST 2003:2020](#)
 - [PEFC GD 2001:2025](#)

PEFC
PEFC/01-00-01

PEFC GD 2001:2025

Chain of Custody of Forest and Tree Based Products and Related Standards – Guidance for Use

Second edition

The cover image shows a wooden deck with a railing and a wooden chair, set against a background of a forest and a building. A yellow circle is overlaid on the bottom right of the image.

PEFC
GUIDANCE
DOCUMENT

PEFC Council

ICC Building C1, Route de Pré-Bois 20, 1215 Geneva 15, Switzerland

t +41 22 799 45 40 • f +41 22 799 45 50 • e info@pefc.org • www.pefc.org

GD 2001:2025: Background (1)

- Contains clarifications issued by CoC Working Group
- Members consultation completed in February and comments discussed in CoC WG
- Approved by the Board in May 2025
- Clarifications on the document are highlighted in **dark green**

PEFC
PEFC/01-00-01

PEFC GD 2001:2025

Chain of Custody of Forest and Tree Based Products and Related Standards – Guidance for Use

Second edition



PEFC Council

ICC Building C1, Route de Pré-Bois 20, 1215 Geneva 15, Switzerland

t +41 22 799 45 40 • f +41 22 799 45 50 • e info@pefc.org • www.pefc.org

GD 2001:2025: Background

- PEFC has revised its SFM standard ST 1003:2024
- The GD 2001:2025 clarifies the revised definitions from ST 1003:2024 that are defined in the PEFC ST 2002:2020
- Affected definitions include: Forest, forest conversion, forest plantation, trees outside forests
- Some definitions could be calibrated at national level by the NGB



PEFC/01-00-01

PEFC ST 1003:2024

Sustainable Forest Management – Requirements



PEFC Council
ICC Building C1
Route de Pré-Bois 20
1215 Geneva 15
Switzerland
t +41 22 799 45 40
f +41 22 799 45 50
e info@pefc.org
www.pefc.org



PEFC/01-00-01



PEFC: ON THE PATH TO EUDR ALIGNMENT



GD 2001:2025: Introduction

- Conformity assessment activities need to be carried out against PEFC ST 2001:2020; PEFC ST 2002:2020; PEFC ST 2003:2020 and interpretations.
- Clarifications provided in this GD, should be considered during the audit.
- This document replaces PEFC GD 2001:2022. Annex 1: Guidance for the implementation of PEFC Chain of Custody for specified projects, of PEFC GD 2001:2014 remains valid until covered by a new official document.



Questions